



ITA - AITES WORLD TUNNEL CONGRESS

21 - 26 April 2018

Dubai International Convention
& Exhibition Centre, UAE

ORAL PAPER PROCEEDINGS



Design Aspects of Fibre Reinforced Shotcrete Linings based on Experimental Test Results

Ralf Winterberg¹, Karoly Peter Juhasz², Peter Schaul², Lorant Nagy²
¹ EPC Holdings Pte Ltd, Singapore, rwinterberg@elastoplastic.com
² JKP Static Ltd, Hungary, office@jkp.hu

ABSTRACT

The design of fibre reinforced shotcrete (FRS) linings for tunnels or mines is commonly based on the well-known and widely recognised Q-System or Barton charts. This performance based design approach accesses the results of experimental tests, carried out on panel specimens according to existing standards or guidelines. This is different to the general methodology to access and determine the performance of fibre reinforced concrete (FRC) using standardised beam tests. Panel and beam test results yield significantly different information on the performance of FRC and it is problematic to correlate them. The beam test yields a stress-strain relationship for a small displacement range only. However, ground deformation and crack development can make it very difficult to predict exact stresses in a shotcrete lining. Performance data from panel tests at larger displacements are the safer option regarding the design. A beam test is a low deformation test (up to 4 mm central displacement) and thus, does not provide information for larger displacements that can be found in usual underground environments. Due to the geometry of the specimens and its test setup, a beam test focuses only on the small width of a singular crack with a very short crack length, depending on the specimen width. These limitations make it unrepresentative for statically indeterminate and highly redundant shotcrete linings, where stress redistribution is possible and larger deformations occur.

When evaluating FRS for the design of a FRS lining it is very important to use a test methodology that is well representative of its working mechanism and failure mode, and reflects the full capabilities of the composite material. Based on the significantly different working and failure mechanisms, structural tests to evaluate the post-crack performance and the ductility of a FRS lining are typically conducted on different types of panels rather than on traditional beams.

However, for special conditions or checks a more accurate design method must be employed to address particular design details of the shotcrete lining. Appropriate tools therefore are thrust-moment capacity envelopes or the Finite Element Analysis. These calculations require defined material parameters, such as the stress-strain or the stress-crack width relationship of fibre reinforced concrete. Normally, standardised beam tests according to existing standards must be carried out to determine these material parameters.

This paper addresses the difficulty in correlating test results obtained from beams and panels. The significant difference in results among beam and panel tests is shown and discussed with regard to their implementation into a FRS lining design. A numerical model based on experimental test results is presented to predict core material parameters of FRC derived from panel tests in order to avoid additional beam testing, which not only implies a complicated test setup but also the inherent variability of the results, likely leading to uneconomic designs.

Keywords: fibre reinforced concrete, fibre reinforced shotcrete, macro synthetic fibre, test methodology, lining design

1. INTRODUCTION

The basis of the design for fibre reinforced shotcrete tunnel linings was created in the middle of the 20th century. From these years the design procedure changed more from empirical to scientific.

however the old traditional and well-established recommendations will not be out of the daily practice. The basis of the shotcrete lining design was the quantitative tables, like the Q-C charts. Nowadays, with advanced finite element software, the rock separation and layering can be modelled, and from the calculated stresses the necessary fibre reinforcement for the shotcrete can be calculated determined.

The Q-system was developed for classification of rock masses and ground and for evaluating the need requirements for support in tunnels and or rock caverns. It was developed at by the Norwegian Geotechnical Institute (NGI) in the middle of the '70-s, originally included a little more than 200 tunnel case histories, mainly from Scandinavia (Barton et al., 1974). The system was updated to include more than 1000 cases (Grimstad and Barton, 1993). It is a classification system for estimates of tunnel support, based on a numerical assessment of the rock mass quality using with several parameters. To get the overall rock mass quality a formula with three different quotients can be used, where the first parameters represent the relative measure of the rock size, the second quotient is described as an indicator of the inter-block shear strength, and the third quotient is described as the active stresses. The formula can be seen below:

$$Q = \frac{RQD}{J_n} \times \frac{J_r}{J_a} \times \frac{J_w}{SRF}$$

where:

- RQD: Rock quality designation (degree of jointing)
- J_n: Number of joint sets
- J_r: Roughness of the most unfavourable joint or discontinuity
- J_a: Joint alteration number
- J_w: Joint water reduction factor
- SRF: Stress reduction factor

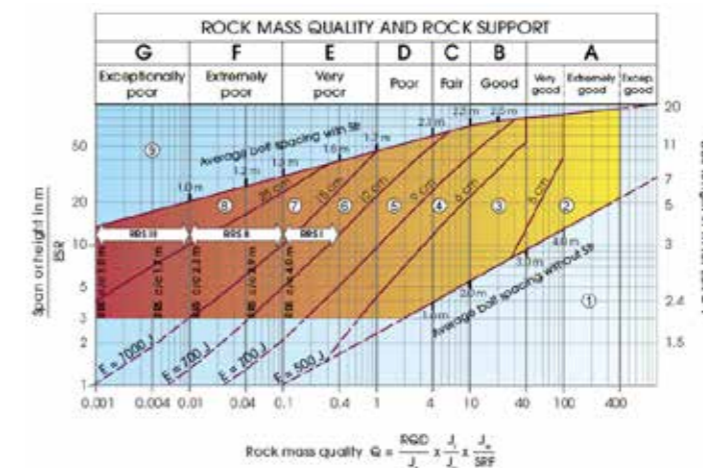


Figure 1. Barton Q-Chart

From the Q value groups can be made to categorize the ground according to the rock mass quality. If the capacity of the rock is not sufficient, a common strengthening is to use fibre reinforced shotcrete and bolting. To define the necessary fibre reinforcement the energy absorption of the fibre reinforced shotcrete must be determined. This parameter can be obtained by means of panel tests (square or round), i.e. by measuring the middle point deflection and the reaction force. A further detailed overview on the design of fibre reinforced shotcrete linings is given in Nitschke and Winterberg (2016).

There are several recommendations for panel tests based on the geometry of the panel, the loading supports and the method of the loading. In Europe the basis of the panel tests were the recommendations of EFNARC (1996). Nowadays we use the harmonized European panel testing standard EN 14488-5:2006, which also employs a 600x600x100 mm centrally loaded square panel, but is supported by a continuous 20 mm wide steel frame.

In North America and in Australia round determinate panel (RDP) tests according to ASTM C 1550 (2012) are carried out, using a 75 mm thick panel with a diameter of 800 mm on three-point pivoted supports. To obtain a better fibre distribution and to reduce variability it is also possible to do super-size round panels with a diameter of 1200 mm and a thickness of 150 mm.

These different panel tests all have in common that the specimens should be sprayed at the site and are not externally or internally compacted. For comparison, cast specimens that are compacted by vibration can also be used.

To design tunnels with Finite Element Analysis (FEA) software the measured energy absorption values are not sufficient; it is required to determine different concrete-specific and fibre reinforced concrete-specific parameters as well. One of the key parameters is the residual flexural strength, which describes and quantifies the fibre effect in the concrete. This parameter can be determined by using the harmonized European beam test EN 14651:2005, measuring the load vs. the crack mouth opening displacement (CMOD). This is a three-point bending test with a notch in the centre of the beam span. Material parameters can be gained from the residual flexural strength values according to different guidelines (Model Code 2010, 2012; RILEM, 2003; OVBB, 2008; ACI 544, 1999) which can be used in calculations.

The process of a panel test is relatively quicker compared to a beam test, with a lower variability of results. The beam tests need more preparation and the results could be misleading because of limited crack propagation and the variability is usually high with COV's up to over 30%. There are methods to reduce the variability, but this makes the tests even more complex (Juhasz, 2015). Similar research has been done by Bernard (Bernard, 2002) comparing beam and panel tests (square and round panels).

Laboratory research is presented in this paper, where panels and beams were tested. Results were compared and a numerical FEA model was made to estimate the results of both types of test with the same material model parameters. The possibility of estimating the material parameters from panel tests was then examined.

2. LABORATORY TEST

2.1 Test matrix

Sprayed panels and cast beams were produced to complete the previously presented test matrix (Juhasz et al., 2017). With this the results of plain concrete and FRC using three dosages of macro synthetic fibres (BarChip 48) were completed using one typical shotcrete fibre (BarChip 54). For the new series, three square panels and three beams were made. The specimens were produced in a tunnel jobsite in Poland and the test was carried out at the Adolf Czako Laboratory of the Department of Mechanics, Materials & Structures, Budapest University of Technology and Economics. The tests were conducted using a Zwick Z150 universal testing machine with a capacity of 150 kN. The test matrix can be seen in Table 1, with the new series in the right-most shaded column.

For the tests a sprayed concrete mixture was designed. The beams and the panels used the same mix design. The panels were sprayed and the beams were cast at the field. The macro synthetic fibre was BarChip 54 with 3.0 kg/m³ dosage. The fibre length is 54 mm, it is continuously embossed and has a minimum tensile strength of 640 MPa.

Fibre dosage	Plain concrete	2.5 kg/m ³ BC48	5.0 kg/m ³ BC48	7.5 kg/m ³ BC48	3.0 kg/m ³ BC54
Square panels	SQ PC 1-3	SQ 2.5 1-3	SQ 5.0 1-3	SQ 7.5 1-3	SQ 3.0 1-3
	<u>cast</u>	<u>cast</u>	<u>cast</u>	<u>cast</u>	<u>sprayed</u>
Beams	B PC 1-4	B 2.5 1-4	B 5.0 1-4	B 7.5 1-4	B 3.0 1-3
	<u>cast</u>	<u>cast</u>	<u>cast</u>	<u>cast</u>	<u>cast</u>

The beam and the panel test specimens were all stored under water according to EN 12390-3 and EN 14488-5. The specimens' testing date was at the age of 28 days. The concrete mix of the field specimens was according to Table 2.

Table 2. Shotcrete mix design

Component	Type	[kg/m ³]
Cement	CEM I 42.5-R	430
Sand 0-2mm	<u>Smolice</u>	800
Aggregate 2-8mm	<u>Wolimex</u>	960
<u>Superplasticizer</u>	<u>MasterGlenium</u>	3
Fibres	<u>BarChip 54</u>	3.0
<u>w/c ratio</u>	0.41	
<u>Slump</u>	150-200	

2.3 Testing methods

The panel tests were carried out according to the EN 14488-5 standard. The specimens' geometry was 600x600 mm with 100 mm thickness. The panels were tested on a steel support frame according to the standard mentioned above (see Figure 2).

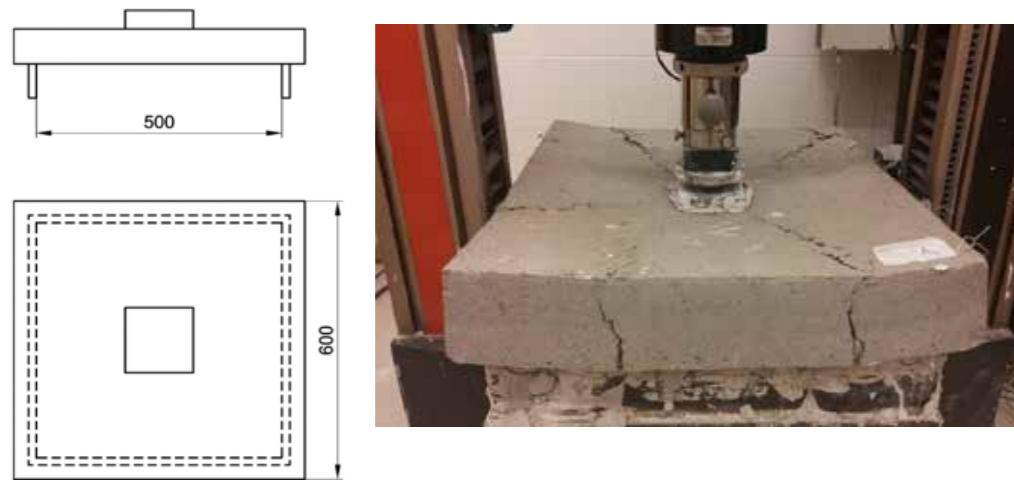


Figure 2. Setup of panel test according to EN 14488-5:2006

A levelling mortar layer was applied between the sample and both the loading block and the square support frame. The test was displacement controlled with a speed of 1 mm per minute. The load-deflection curve was recorded and the test was continued until a deflection of at least 30 mm was reached at the centre point of the slab. This also allows to investigate the fibre effects in larger crack widths. Beam testing was similar to the specification of EN 14488-3:2006. The test was a four point bending test of the macro synthetic FRC specimens with a length of 700 mm, cross-section of 150x150 mm on 450 mm span). The loading of the beam was in the third points of the beam (see Figure 3). The testing machine used was the same deflection controlled universal testing machine used for the panel tests. The testing speed was 0.25 mm/min up to 0.5 mm centre point deflection, and 1.0 mm/min thereafter. The test was continued out to 4 mm deflection. The load and the centre point displacement were recorded during the test.

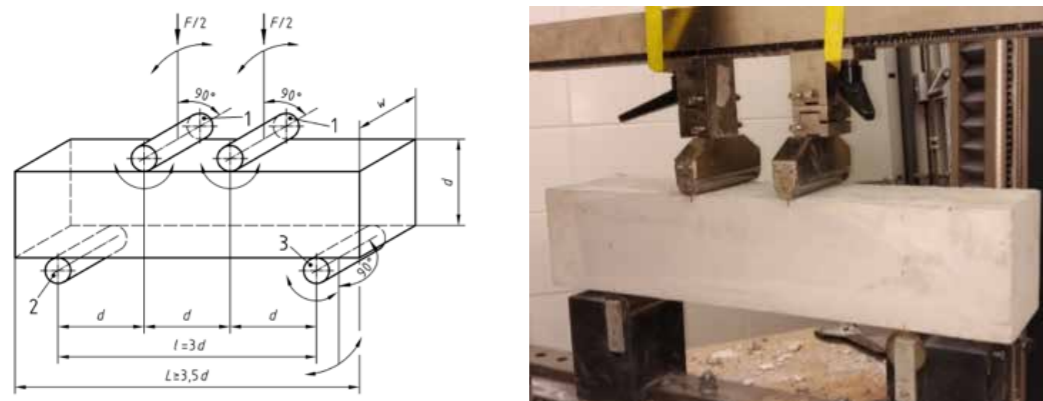


Figure 3. Setup of bending test in dependence on EN 14488-3:2006

3. TEST RESULTS

The square panel test results can be seen in Figure 4 and the beam test results in Figure 5. Compared to the previous research (see Figures 6 and 7) the sprayed panel results had a larger dispersion, and also the tests with the four point beams led to a higher variability. It can be also seen that the dispersion of the post-crack beam results are significantly higher than in case of the panels. The resulting crack patterns of the panels were absolutely different, depending on the fibre dose rate (see Figure 8). The general post-crack behaviour of the panels and the beams is similar: after the peak load a small drop can be seen and after this the fibres engage and provide a stable performance.

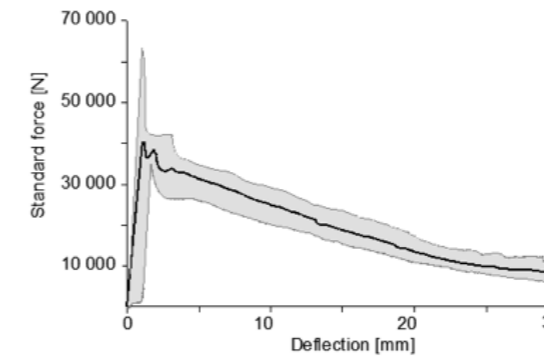


Figure 4. Sprayed square panel test results

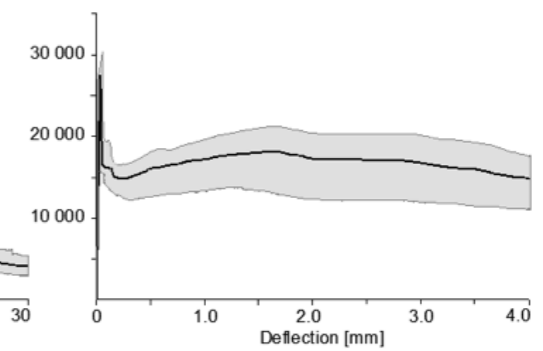


Figure 5. Cast beam test results

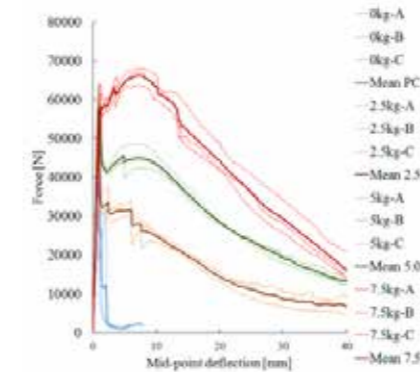


Figure 6. Poured square panel test results

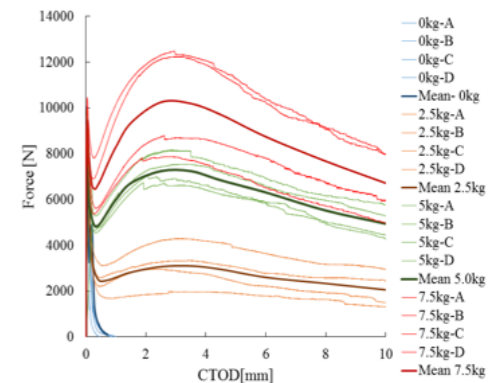


Figure 7. Cast beam test results

Due to the high variability the mean values of the beam results are not normative and the results had to be modified. To calculate a modified mean value, after the test the number of the fibres on the cracked cross section was counted in five different layers. With this method developed by Juhász (Juhász, 2013) the effect of fibre orientation and the improper location are eliminated from the results. This modified mean value better represents the real capacity of the fibres.



Plain concrete 2.5 kg 5.0 kg 7.5 kg

compare the effect of the fibres with different dosages the area under the load-deflection curve in the case of panels, and the area under the load-CMOD diagram, can be calculated.

Due to their different working mechanism, the correlation between panel and beam tests can't be formulated directly, but the test could be modelled using advanced Finite Element Analysis (FEA).

4. NUMERICAL MODELLING

4.1. Material model of concrete and FRC

The behaviour of FRC material is analysed using ATENA (Cervenka et al., 2016) for non-linear analysis of concrete structures. ATENA is capable of a realistic simulation of concrete behaviour in the entire loading range with ductile as well as brittle failure modes as shown for instance in (Cervenka, 2002). It is based on the finite element method and non-linear material models for concrete, reinforcement and their interaction. The tensile behaviour of concrete is described by smeared cracks, crack band and fracture energy and the compressive behaviour of concrete by a plasticity model with hardening and softening. The constitutive model is described in detail in (Cervenka & Papanikolaou, 2008). The non-linear solution is performed incrementally with equilibrium iterations in each load step. Numerous other models can be used to approximate the post-cracking capacity of FRC. The model presented in the ITAtech guideline (ITAtech Activity Group Support, 2016) was used here.

A thin band with micro-cracks will appear due to the tensile stress in the concrete – which is called the crack process zone. By increasing the stress the concrete reaches its tensile strength when the micro cracks are touching each other. After this point the tensile capacity of the concrete will decrease, the cracks will bypass or cross the aggregates and then the entire section will be crossed by a macro crack. The area under the “tensile stress – crack width” diagram is the fracture energy.

The fracture energy of the concrete is influenced by a number of factors which are clearly not related to the concrete's strength class. Most of the existing design methods neglect the fracture energy of the concrete and do not pay much attention to the tensile strength. However, when designing FRC structures these parameters cannot be ignored.

The main goal in this method is to separate the fracture energy of the concrete (G_f) and added fracture energy by the fibres (G_{ff}), see Figures 9 and 10. According to previous research (Juhász, 2015) the added fracture energy depends on the fibre type, dosage and cement mortar (cement, water and sand). By knowing these values the added fracture energy can be defined and used as a parameter partly independent from the concrete.

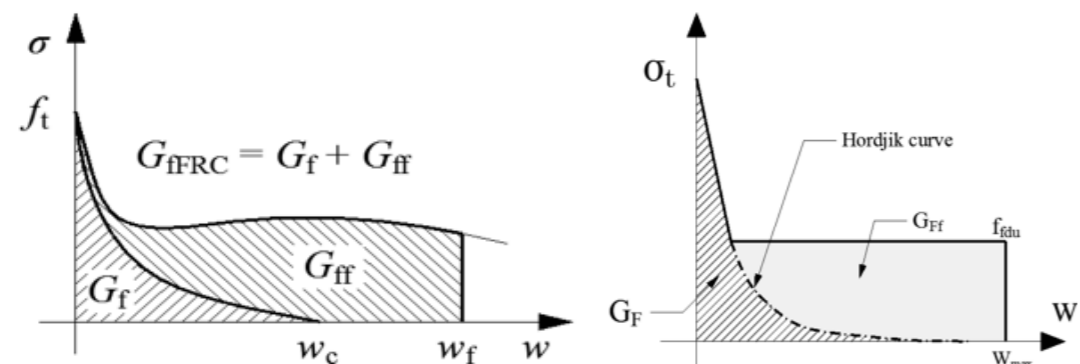


Figure 9. Fracture energy of the FRC for numerical

Figure 10. Used tensile function calculation

The most sophisticated model of FRC material represents an extension to the fracture-plastic constitutive law (Cervenka & Papanikolaou, 2008). It describes the tensile behaviour according to the material response measured in tests point-wise in terms of the stress-strain relationship. The first part of the diagram is the usual stress-strain constitutive law. After exceeding the localization strain ϵ_{loc} the material law assumed for the characteristic crack band width L_{ch} is adjusted to the actual crack band width L_t . The characteristic crack band width (characteristic length) is the size (length) for which the defined material law is valid. The same procedure (with eventually different characteristic length) is used for the compression part of the material law. The softening law in compression is linearly descending and the end point of the softening curve is defined by the plastic displacement w_d (corresponding to ϵ_d in Figure 11b). By increasing the material parameter w_d the contribution of the fibres to the compressive behaviour of concrete is considered. Another important parameter for FRC modelling is the reduction of the compressive strength due to developing cracks that determine how the strength is reduced while the material is subjected to lateral tension.

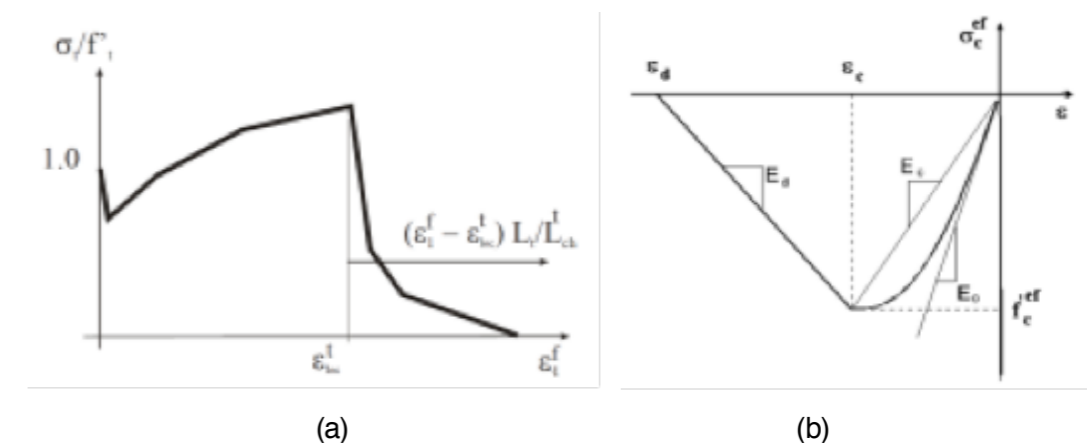


Figure 11. (a) User defined tensile behaviour, (b) compressive stress-strain law

4.2. Numerical modelling of the square panel test

The numerical verification was made using ATENA. To get a proper result the full experimental setup had to be modelled, including the loading device, the supports and the levelling mortar layer. To be able to model the curling rise of the panel's corners from the steel formwork, a non-linear interface material was applied between the concrete panel and the centrally located steel loading plate.

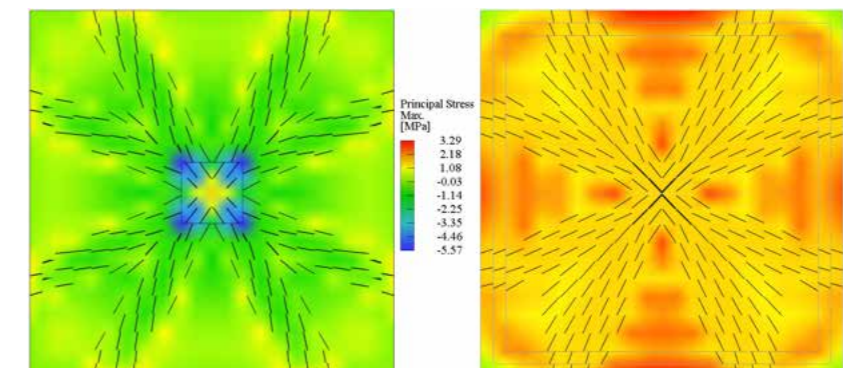


Figure 12. Numerical model of the square panel with upper surface (left) and bottom surface (right)

The material parameter of this layer was adjusted as for the parameters of the mortar layer. The compressive strength of the interface layer was 10-times higher than the shear and tension capacity. The virtual test was displacement controlled to be able to model the post-crack behaviour of the panel. During the analysis the mid-point deflection and the reaction force was measured.

Structural hexahedra mesh was used in the model to obtain the proper crack propagation. The size of the brick elements was 25 mm in every case. Figure 12 shows the principal stress and cracks of the panel when modelled by FEA (upper surface of the panel on the left and lower surface on the right).

The material parameters used were determined by inverse analysis. The values of the different design parameters can be seen in Table 3. The characteristic residual flexural strength values reflect the referring macro synthetic fibre dosage.

Table 3. Material parameters used for the FEA

	Fibre dosage	Value
Compressive strength		48 MPa
Tensile strength		3.5 MPa
Fracture energy of concrete		87.5 N/m
Residual flexural strength	2.5 kg	0.35 MPa
	5.0 kg	0.70 MPa
	7.5 kg	1.05 MPa

5. RESULTS OF THE NUMERICAL MODEL

The mean values of the tests and the numerical results of the panels can be seen in Figure 13a.

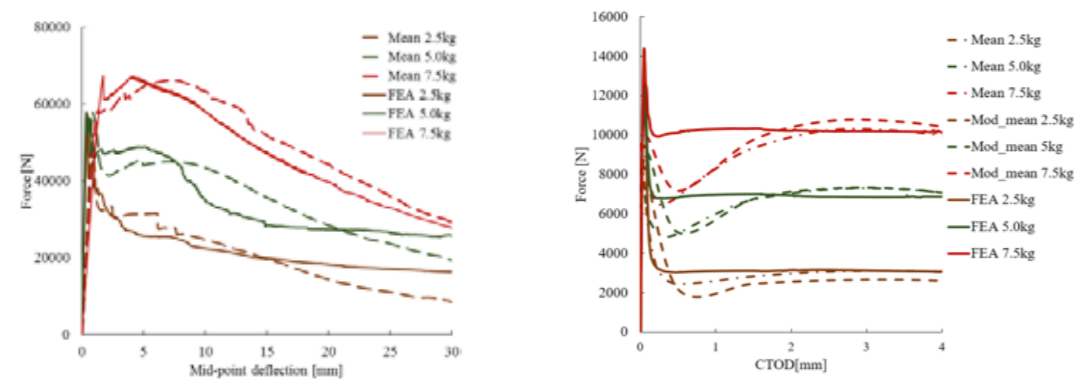


Figure 13. Results of the panel (a) and beam tests (b) with their modelling by FEA. The behaviour and value of the numerical model closely matches the test results for each dosage of fibre. The peak load is almost the same, and the slope of the curve from FEA is close to the test curve for each fibre dosage. Note that the maximum difference in the areas under the curves was only 7%.

Using the same material parameters the beam tests were modelled with ATENA and the results can be seen in Figure 13b. The differences in the areas under the curves range from 4% to 18% using modified mean values, and 4% to 10% using mean values.

Material parameters can be derived from panel tests, where there is much lower variability of the results than for beam tests. The residual strength parameter is a function of the fibre dosage, which produced a nearly linear function in the test series. Using FEA a correlation can be made between the dosage of fibres and their performance. Even using a linear residual strength model the correlation is acceptable, leading to a proper material model.

6. CONCLUSION

Macro synthetic fibre reinforced concrete structures are becoming more common in the tunnelling industry, especially in shotcrete tunnel linings. Both for the design and for their calculation the performance of the fibres in the concrete has to be determined. The current tests used in Europe are the square panel test and the three point bending beam test which define the fibre reinforced concrete's post crack performance. Beam tests are more common to designers, although they have an inherent high variability. Square panel tests provide a more favourable variability, but the material parameters cannot be directly obtained from their results so far. However, the square panel test results can be used to determine the fibre reinforced concrete energy absorption which can be applied in the design with the Q-Chart.

To try to find a correlation between fibre reinforced concrete panel and beam tests, a laboratory test series was carried out using a typically used sprayed concrete mixture and both beams and panels were cast with different dosages of macro synthetic fibres. According to the results a direct correlation cannot be found between the two different testing methods because of the different working and failure mechanisms: while in the case of square panels the number of cracks increases with an increase in the amount of fibres added, opposed to the beam tests where there is only one crack located in the centre of the beam due to strain localization in a static determinate setup.

A numerical model was developed to be able to do further calculations from the panel results. A finite element material model was defined for all square panel tests with an inverse analysis calculation undertaken which well corresponds to the area under the individual load-deflection curves. This defined material model is capable of calculating the beam performance using the same material properties and thus, the further calculation and design became possible. It could be useful for design engineers to verify a material model using only panel tests.

Further research is planned to determine the performance of different fibres in panels and beams and to compile a database for design engineers with the test results.

7. REFERENCES

ACI Committee 544.4R-88. 1999. Design Considerations for Steel Fibre Reinforced Concrete, ACI Committee 544. Farmington Hills: American Concrete Institute. 18 p.

ASTM C 1550 (2012). Standard Test Method for Flexural Toughness of Fiber Reinforced Concrete (Using Centrally Loaded Round Panel)

Bernard, E.S. 2002. Correlations in the behavior of fibre reinforced shotcrete beam and panel specimens. *Materials and Structures* 35. pp 156-164.

Cervenka, J., Papanikolaou V.K. 2008. Three dimensional combined fracture-plastic material model for concrete, *International Journal of Plasticity* (24). pp 2192-2220.

Cervenka, V., Jendele, L., Cervenka, J. 2013. ATENA Program Documentation: Part 1 Theory. Prague: Cervenka Consulting s.r.o. 318 p.

EFNARC. 1996. European Specification for Sprayed Concrete. European Federation for Specialist Construction Chemicals and Concrete Systems, www.efnarc.org

EN 14487-1, 2005. Sprayed concrete - Part 1: Definitions, specifications and conformity. Brussels: European Committee for Standardization (CEN). 41 p.

EN 14488-3, 2006. Testing sprayed concrete, part 3: Flexural strengths of fibre reinforced beam specimens. Brussels: European Committee for Standardization (CEN). 12 p.

EN 14488-5, 2006. Testing sprayed concrete - Part 5: Determination of energy absorption capacity of fibre reinforced slab specimens. Brussels: European Committee for Standardization (CEN). 8 p.

EN 14651, 2005. Test method for metallic fibered concrete - Measuring the flexural tensile strength (limit of proportionality (LOP), residual)

EUROCODE EN 1992. 2004. European Code for design of concrete structures. Brussels: European Committee for Standardization)
fib Model Code 2010, 2012. Bulletin 65 and 66, Fédération Internationale du Béton, Lausanne.

Grimstad, E., Barton, N. 1993. Updating of the Q system for NMT. Proceedings of the International Symposium on Sprayed Concrete. Modern Use of Wet Mix Sprayed Concrete for Underground Support, Fagernes. Oslo: Norwegian Concrete Association. 18 p.

ITAtch Activity Group Support. 2016. ITAtch Guidance for Precast Fibre Reinforced Concrete Segments – Vol. 1: Design aspects. ITAtch Report N°7. Avignon: Longrine. 48 p.

Juhász, K.P. 2013. Modified fracture energy method for fibre reinforced concrete, in *Fibre Concrete 2013: Technology, Design, Application* (ed. Kohoutkova A, et al). Prague: Faculty of Civil Engineering Department of Concrete and Masonry Structures. pp. 89-90

Juhász, K.P. 2015. Evaluation of fibre reinforced concrete beam test results based on the examination of the real fibre distribution, In: 8th International Conference Fiber Concrete 2015, Prague. 9 p.

Juhász, K.P., Nagy, L., Schaul, P., 2017. Correlation of the results of the standard beam and EFNARC panel test. Proceedings of the World Tunnel Congress 2017, Bergen, Norway, 09–15 June 2017

Kolmar, W. 1986. „Beschreibung der Kraftuebertragung über Risse in nichtlinearen Finite-Element-Berechnungen von Stahlbetontragwerken“, Dissertation, T.H. Darmstadt.

Menétrey, P., William K.J. 1995. Triaxial Failure Criterion for Concrete and Its Generalization. *ACI Structural Journal* 92(3). pp 311-318.

Nitschke, A., Winterberg, R., 2016. Performance of Macro Synthetic Fiber Reinforced Tunnel Linings. Proceedings of the World Tunnel Congress 2016, San Francisco, USA, 22–28 April 2016

Österreichische Vereinigung für Beton- und Bautechnik, 2008. Richtlinie Faserbeton. Wien: Österreichische Vereinigung für Beton- und Bautechnik. 109 p.

RILEM TC 162-TDF. 2003. Final recommendation of RILEM TC 162-TDF: Test and design methods for steel fibre reinforced concrete. *Materials and Structures* 36 (262). pp 560–567.

THANK YOU FOR VISITING دبي

